

A Whole New World

from Disney's *Aladdin KIDS*

JASMINE: There's got to be more to life than what's inside the walls of the palace.

MUSIC STARTS

ALADDIN: There's a whole new world out there, just waiting for us.

(ALADDIN whistles for AVIS, who flies around them in a wide circle, and finally docks at the side of the Balcony. ALADDIN steps on and beckons to JASMINE. She steps onto the carpet as ALADDIN puts his arm around her to keep her safe. Meanwhile, JAFAR grabs the lamp and tiptoes out.)

Sweetly ♩=120

1-4 **4** ALADDIN:



I can show — you the world:

7



shin-ing, shim - mer-ing, splen-did. Tell me, prin - cess, now

10



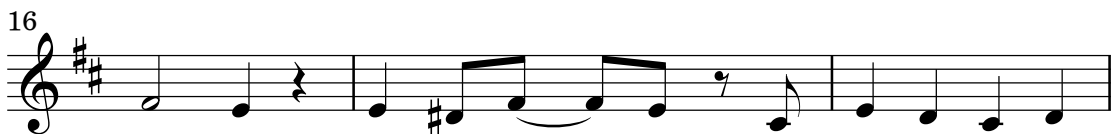
when did you last let your heart de - cide? —

13



I can o - pen your eyes, take you won - der by

16



won - der, o - ver, side - ways and un - der, on a

19 **JASMINE:**



mag - ic car - pet ride. — A whole new world,

22



a new fan - tas - tic point of view. — No-one to

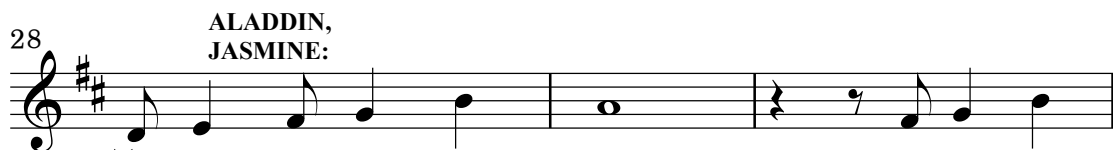
25



tell us "no" or where to go or say we're on - ly dream -

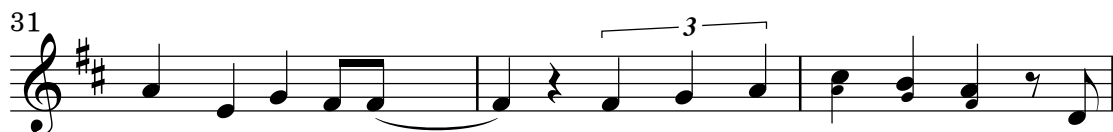
28

**ALADDIN,
JASMINE:**



- ing. A whole new world, a daz - zling

31



place I nev - er knew. — But when I'm way up here, it's

34



crys - tal clear that now I'm in a whole new world with

37

ALADDIN:



you. — Un - be - liev - a - ble sights,

41

JASMINE:



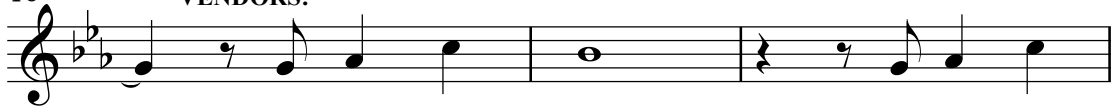
In - de - scrib - a - ble feel - ing, Soar - ing, tumb - ling, free -

44



wheel - ing through an end - less dia - mond sky. —

46 ALADDIN,
JASMINE,
VENDORS:

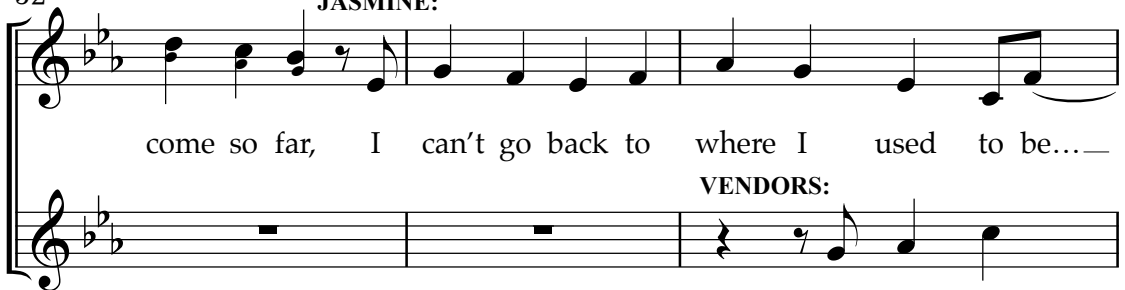


— A whole new world, A hun - dred



thou-sand things to see. — I'm like a shoot-ing star, I've

52 ALADDIN,
JASMINE:



come so far, I can't go back to where I used to be... —

VENDORS:

A whole new



— with new hor - i - zons to pur - sue. —

world, with new hor - i - zons to pur - sue.



— I'll chase them an - y - where, there's time to spare.



Let me share this whole new world with you.

64 ALADDIN,
JASMINE:

A whole new world, That's where we'll
VENDORS:
A whole new world,

Detailed description: This block contains musical notation for measures 64 to 66. It features two staves in a grand staff format. The top staff has a treble clef and a key signature of two flats (B-flat and E-flat). The bottom staff has a bass clef. The music is in 4/4 time. Measure 64: Top staff has a quarter rest, an eighth note G4, a quarter note A4, and a half note B4. Bottom staff has a whole rest. Measure 65: Top staff has a quarter rest, an eighth note G4, a quarter note A4, and a half note B4. Bottom staff has a quarter rest, an eighth note G4, a quarter note A4, and a half note B4. Measure 66: Top staff has a quarter rest, an eighth note G4, a quarter note A4, and a half note B4. Bottom staff has a whole rest.

67 ALADDIN: JASMINE:

be... A thrill-ing chase... A won-drous
That's where we'll be...

Detailed description: This block contains musical notation for measures 67 to 69. It features two staves in a grand staff format. The top staff has a treble clef and a key signature of two flats. The bottom staff has a bass clef. Measure 67: Top staff has a whole note G4. Bottom staff has a quarter rest, an eighth note G4, a quarter note A4, and a half note B4. Measure 68: Top staff has a quarter rest, an eighth note G4, a quarter note A4, and a half note B4. Bottom staff has a quarter rest, an eighth note G4, a quarter note A4, and a half note B4. Measure 69: Top staff has a quarter rest, an eighth note G4, a quarter note A4, and a half note B4. Bottom staff has a whole rest.

70 ALL: A tempo

place... for you and me._____

Detailed description: This block contains musical notation for measure 70. It features a single staff with a treble clef and a key signature of two flats. The music is in 4/4 time. Measure 70: The staff contains a quarter note G4, a quarter rest, a quarter note G4, a quarter note A4, a quarter note B4, a quarter note G4, a quarter note F4, a quarter note E4, and a quarter note D4. The notes G4, A4, and B4 are beamed together. The notes F4 and E4 are beamed together. The notes D4 and the final measure rest are beamed together. The final measure contains a whole rest.